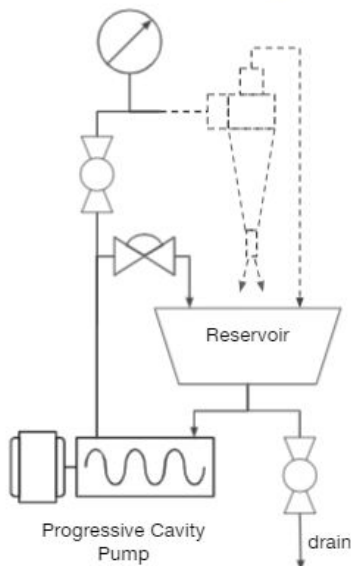
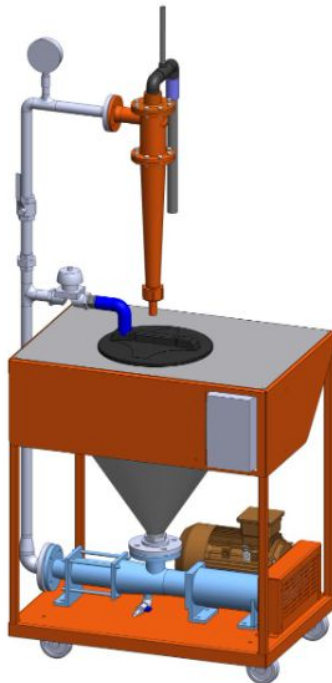




Technical Specification Sheet

C700 Cyclone Test System



Technical Description	
Pump Type	Progressive Cavity
Motor	2.2Kw Electric
Power supply options	Single Phase 200-240V 3-Phase 200 - 240V 3-Phase 380 - 480V
Maximum flow rate	5m ³ /hr
Operating Pressure	0.5 to 4.5 Bar
Reservoir capacity	60L
Electrical Standard	IP66
Cyclone fitting	DN25 Flange
Dimensions (H x W x D)	1950 x 925 x 640mm
Weight	135Kg
Features	
Integral flow control valves & pressure gauge	
Continuous mixing of pulp in the feed hopper	
Variable speed motor to control flow	
Stainless-steel pump, pipework & fittings	
Diaphragm bypass valve for fine pressure control	
Wheeled frame for easy transport around the lab	
Conical tank allows operation with small slurry volumes	
Cyclones and installation kits supplied separately	